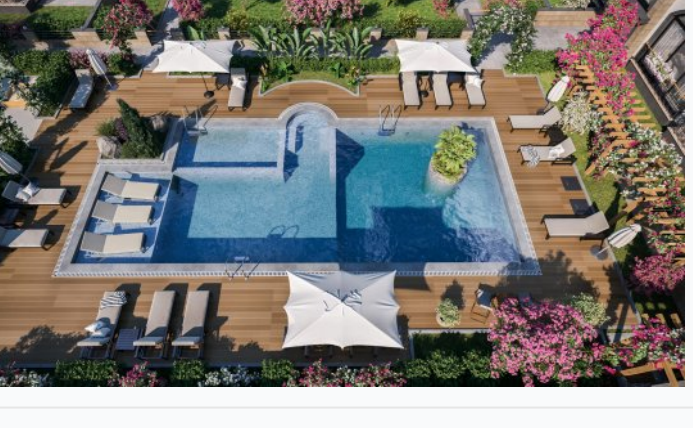


Floral Homes residential complex

Location **Kyrenia, Karaođlanođlu**



About the project



Developer	Nurel Group
Start of sale	01.06.2023
Key handover	2025
Houses/blocks	4
Building floor	2 Min 2 Max
Units total	14 - 2+1

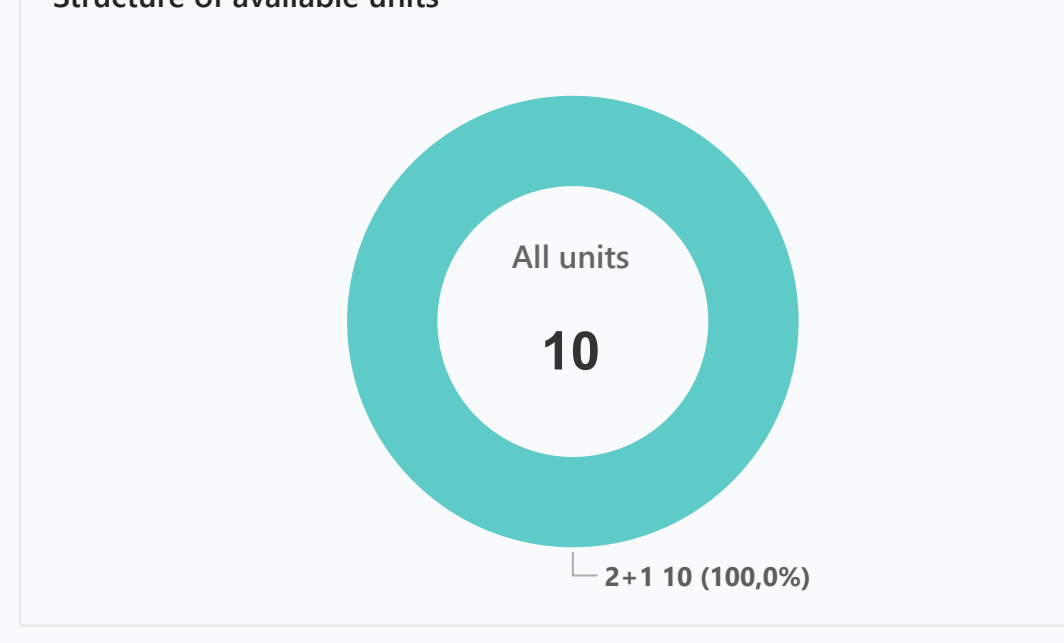
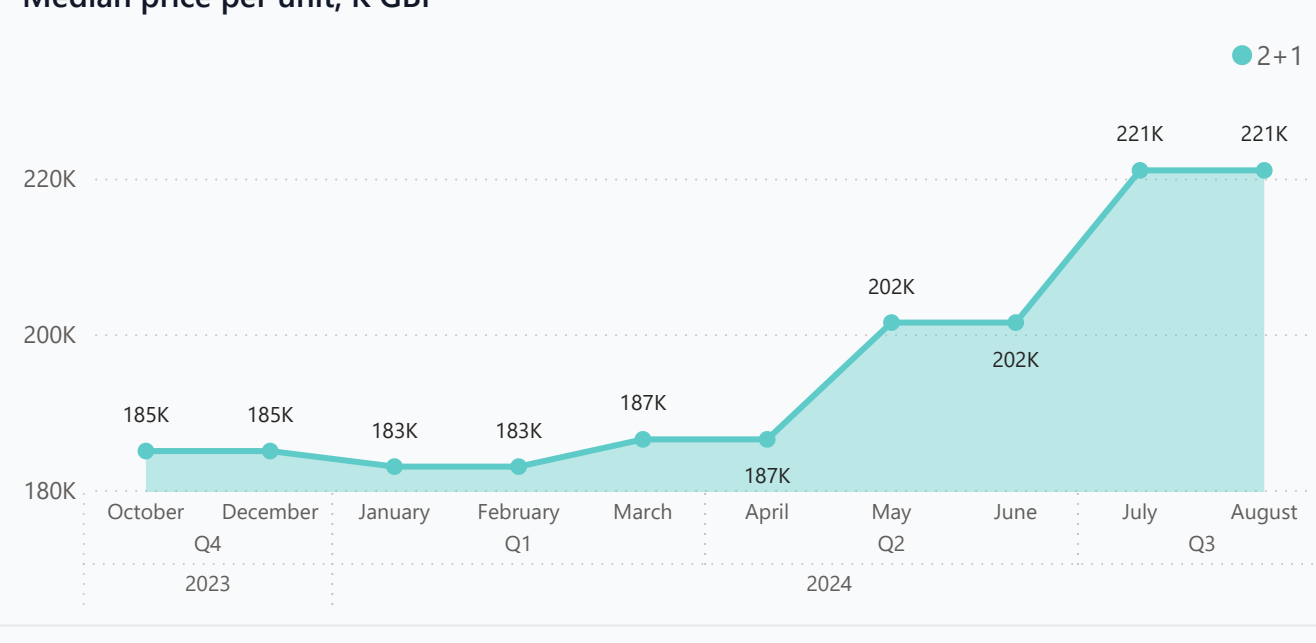
Distance to the sea - 750 m
Distance to key locations:
Near the complex you will find universities, English schools, banks, shops, restaurants and bars, providing you with everything you need for a comfortable life. Airport 60 min.

Floral Homes is a boutique project in the picturesque Lapta area of Northern Cyprus. Here you will find exclusive 2+1 two-bedroom apartments located on plots with stunning panoramic views of the mountains, the endless sea, as well as the surrounding olive and lemon gardens. Just 500 meters away is the sea coast, where you can enjoy magnificent views of the sea and mountains stretching for tens of kilometers.

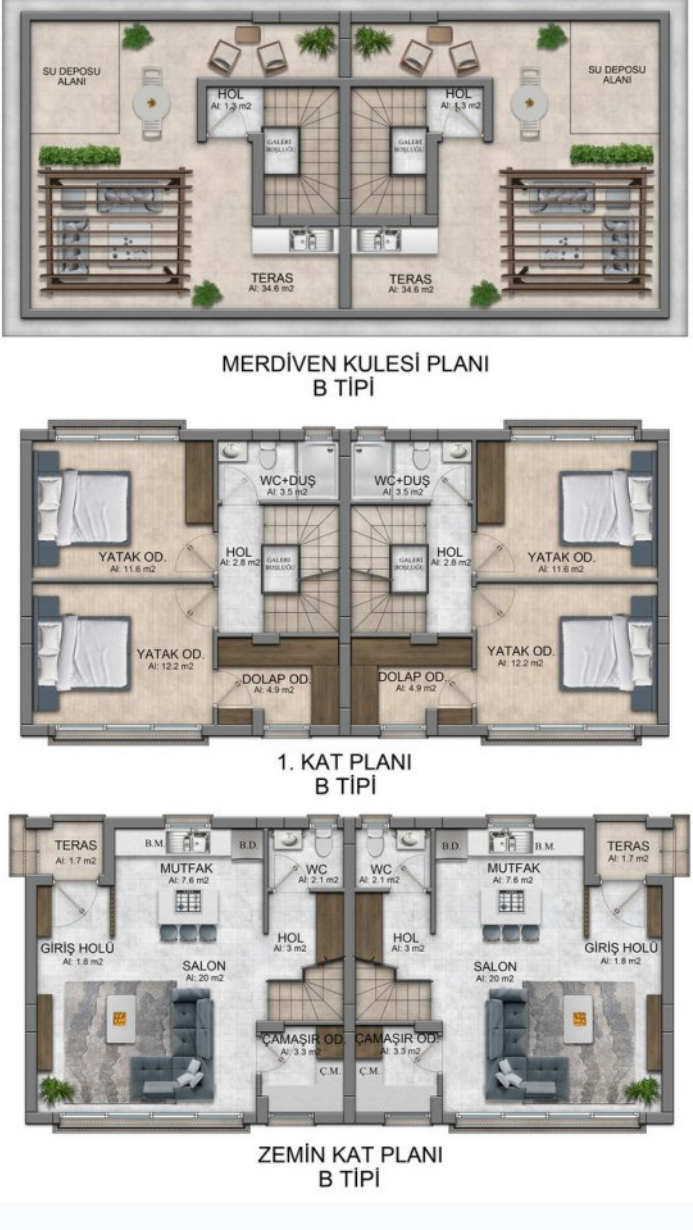
Complex infrastructure

- Automatic Entrance Gate
- Closed territory
- Kid's playground
- Kid's pool
- Laundry
- Open pool
- Parking
- Security Camera System
- Yoga and meditation rooms

Available units 10 / 14 total



Plans



Payment plans

Deposit (non-refundable) Minimum 2500 GBP

Option	Down payment	Installments months	Discount	Offer
Option 1	35 %	65% till key	-	-
Option 2	50 %	till key + 6 mont...	-	-
Option 3	-	-	-	-
Option 4	-	-	-	-

Special offer

- Fully furnished design package
- Rental guarantee

Trafo (Blank) GBP
Resale -
Maintenance fee -
Rental services -

Details

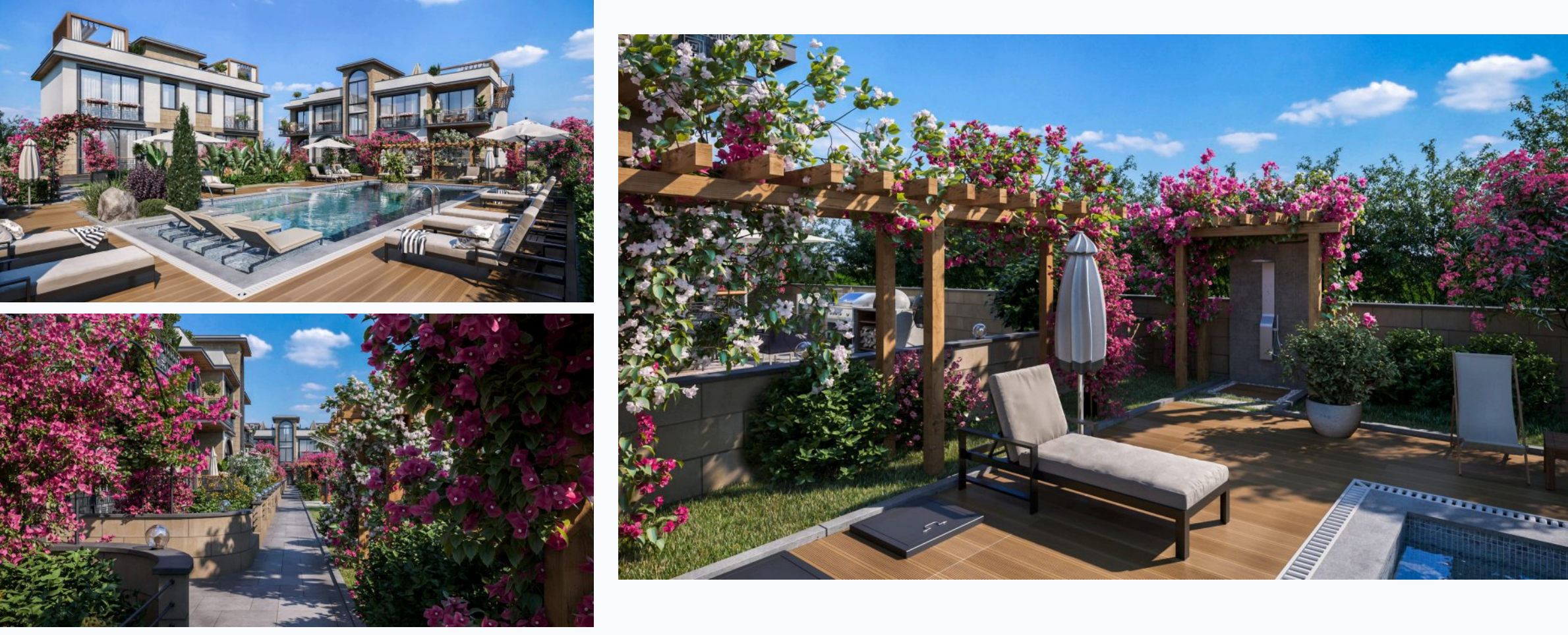
Bedrooms	Subtype	Block	Unit N°	Floor	View	Bathroom	Internal area, sq. m	Balcony/ Terrace, sq. m	Rooftop terrace, sq. m	Garden, sq. m	Gross covered area, sq. m	Current price, GBP	Price per sqm, GBP
2+1	Flat	1	2	0						140	85	217 250	2 556
2+1	Flat	1	1	0						180	85	217 250	2 556
2+1	Flat	1	3	01				57			142	221 050	1 557
2+1	Flat	1	4	01				57			142	221 050	1 557
2+1	Flat	3	2	0						102	85	217 250	2 556
2+1	Flat	3	1	0						117	85	217 250	2 556
2+1	Flat	3	3	01							142	221 050	1 557
2+1	Flat	3	4	01							142	221 050	1 557
2+1	Semi-Detached Villa	4	2	0						35	107	243 000	1 869
2+1	Semi-Detached Villa	4	1	0						35	111	243 000	1 869

Interior specification



- Ceramic flooring
- Fitted wardrobes in each bedroom
- Laminate flooring in the bedrooms
- Steel ladder with wood step
- Underfloor heating
- Underfloor heating in bathrooms

Exterior specification



- BBQ place on the roof
- Landscape design
- Private Garden
- Terracing with inbuilt lighting & power sockets

Location of complex

